



**PVDF+CF**

**WEIGHT**  
0,96 kg

**TEMPERATURE**  
-20°C +90°C

**CE EAC**

**UK CA**

## PERFORMANCE

## TECHNICAL DATA

Fluid connections	1/4" BSPP
Air connection	1/8" BSPP
Max. flow rate	7 lt/min
Max air pressure	6 bar
Max delivery head	60 m
Max suction lift dry	3 m
Max suction lift wet	9,8 m
Max solid passing	2 mm
Noise level	62 dB
Max viscosity	5.000 cps

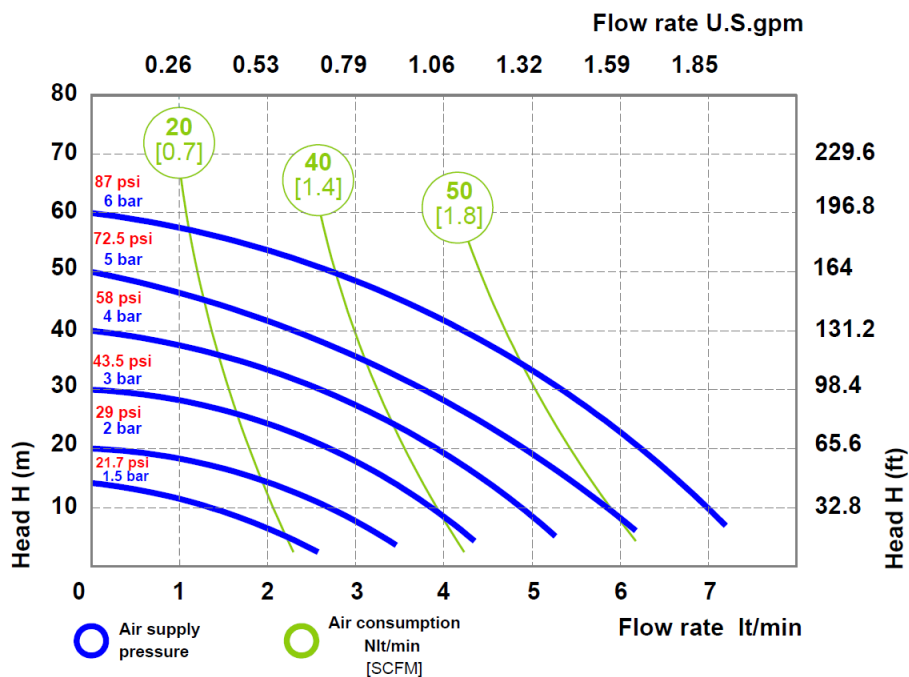
Displacement per stroke **18 CC ~**

Displacement per stroke may vary based on suction condition, discharge head, air pressure and fluid type.

II 3/3 G Ex h IIC T4 Gc

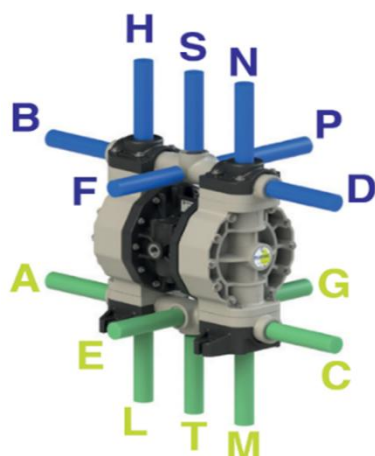
II 3 D Ex h IIIB T135°C Dc X

The curves and performance values refer to pumps with submerged suction and free delivery outlet, with water at 20 °C. These data may vary according to the construction materials and hydraulic conditions.



## COMPOSITION

MODEL	CASING	DIAPHRAGM	BALLS	SEATS	GASKET	CONNECTIONS	ATEX	PORTS
P0008	KC = PVDF+C F	NT = NBR+PTFE	T=PTFE S=SS	K = PVDF	D = EPDM V = VITON N = NBR T = PTFE	1 = BSPP 5 = NPT A = BSPP with reinforce ring E = NPT with reinforce ring	- = ZONE 2	AB = STANDAR D



## AVAILABLE CONNECTIONS

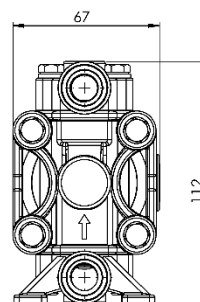
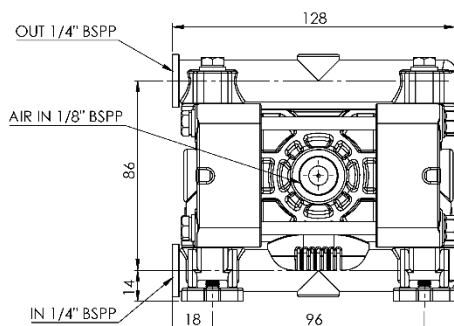
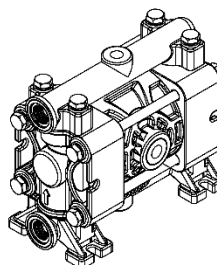
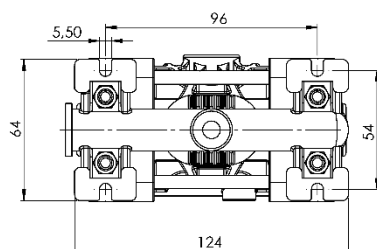
**DELIVERY: B-D-S**

**SUCTION: A-C-T**

## PACKING DIMENSION

**CARTON BOX: 17 x 21 x 11 cm**

## DIMENSIONS



Technical data are approximate and not binding for the manufacturer who reserves the right to change them without notice at any time.